

SPECIAL WORK

Using the techniques and experiences that we have cultivated over many years, we can provide any working parts for machines and special machining parts with faster delivery, higher precision and lower cost than any other companies. YSK will make the special parts for special machine to meet customer's wishes.

YSK will make the special parts for special machine form.

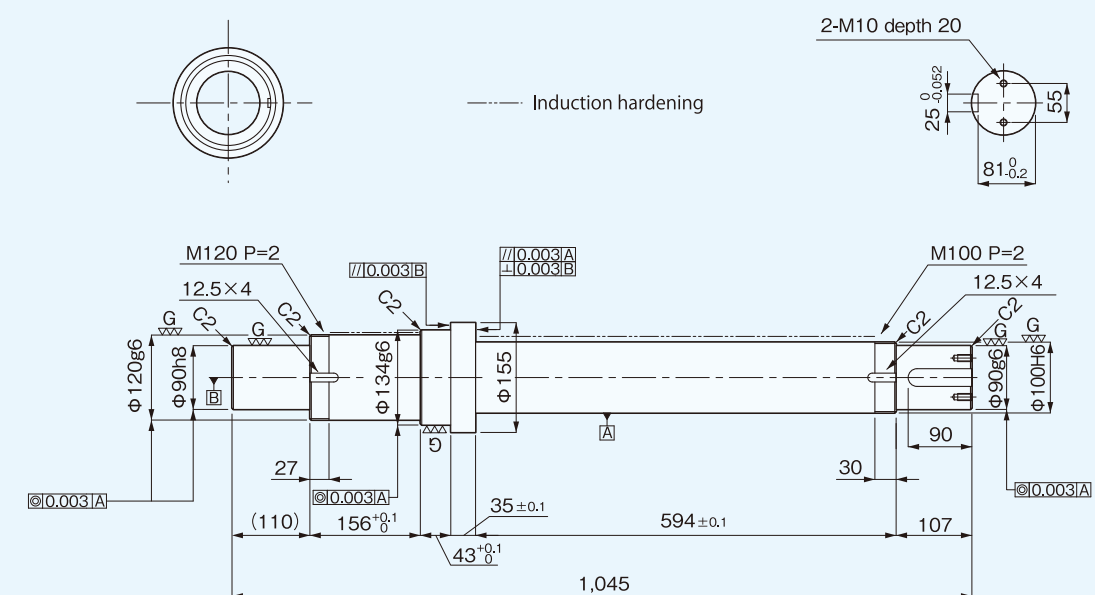
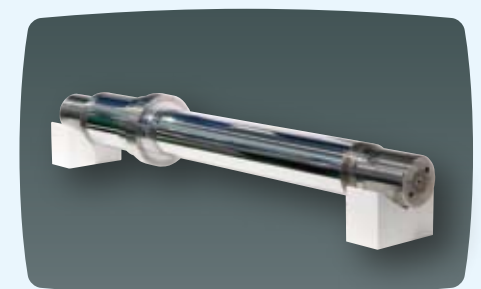
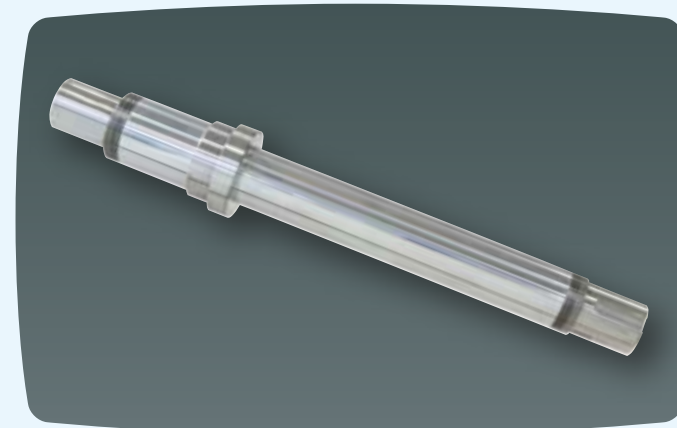


Spindle axis	Base plate
Drive shaft	Machining of wire cut
Roller shaft	Electrical discharge machining
Eccentric shaft	Gun drill, BTA
Cam shaft	Machining of slotter
Gear machining	Machining of spline
rack machining	Machining of internal grinding
Machining trapezoidal Screw, nut	surface grinding
Fine pin	Machining of trapezoidal screw shaft ends

SPECIAL WORK

Slitter main shaft

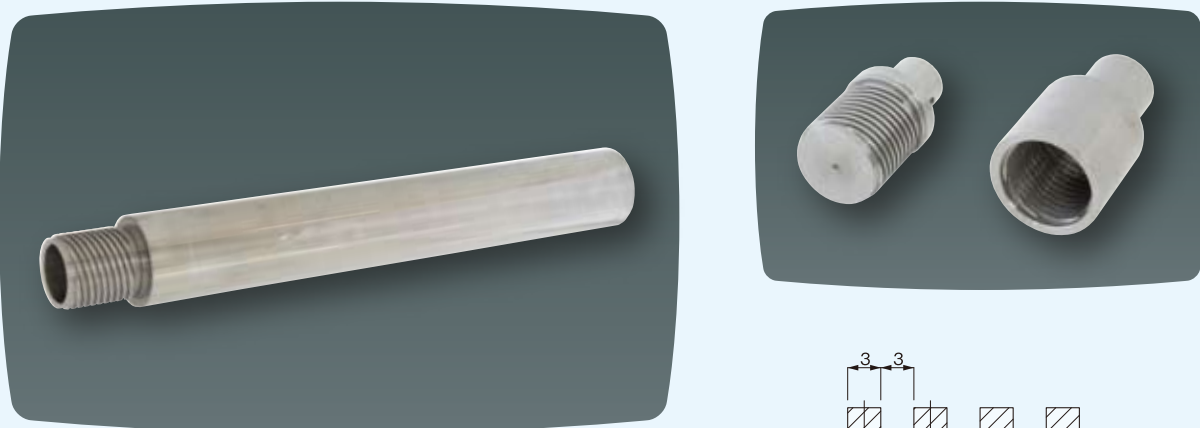
Based on the mechanical drawing, we correspond to various specifications such as ultra precise grinding and plating. We also make high precision main shafts.



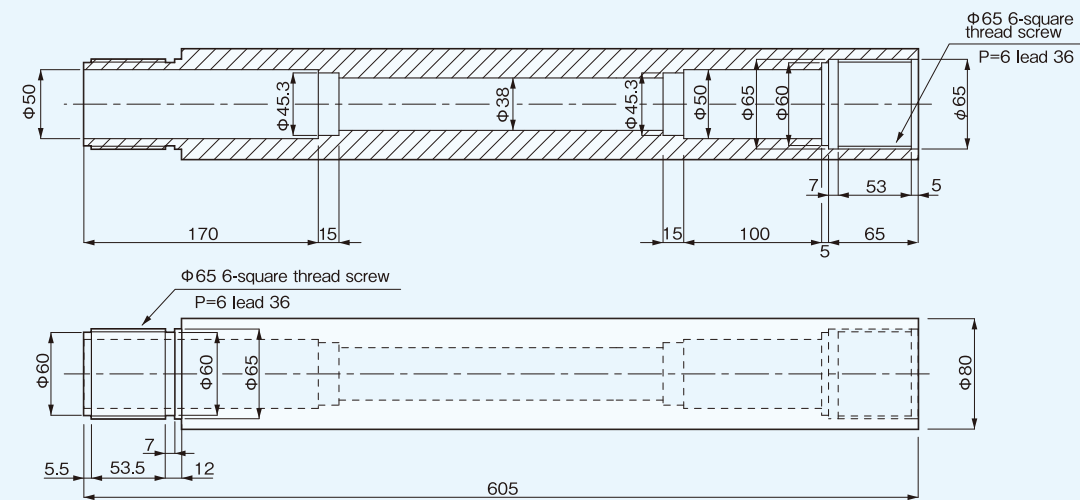
Material	SCM435
Part name	Slitter main shaft
Size	φ155 × 1045
Geometrical tolerance	Concentricity, Straightness, Parallelism 0.003
Treatment	Hcr plating
Manufacturing factory	Kyushu factory
Equipment	Lathe machine, Induction hardening, Cylindrical grinding machine

Mirror roll (with 6-thread screw)

Based on the mechanical drawing, we correspond to various specifications such as ultra precise grinding and plating. We also make high precision mirror surface rolls.



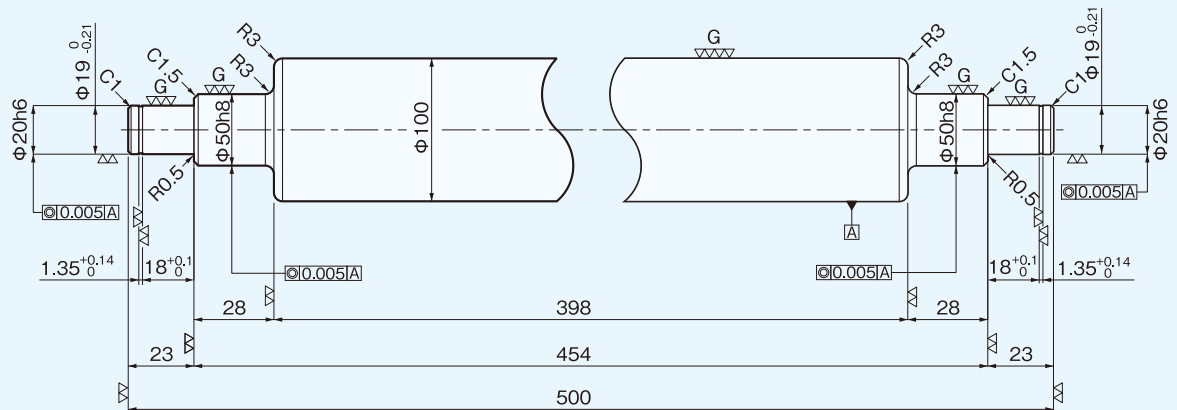
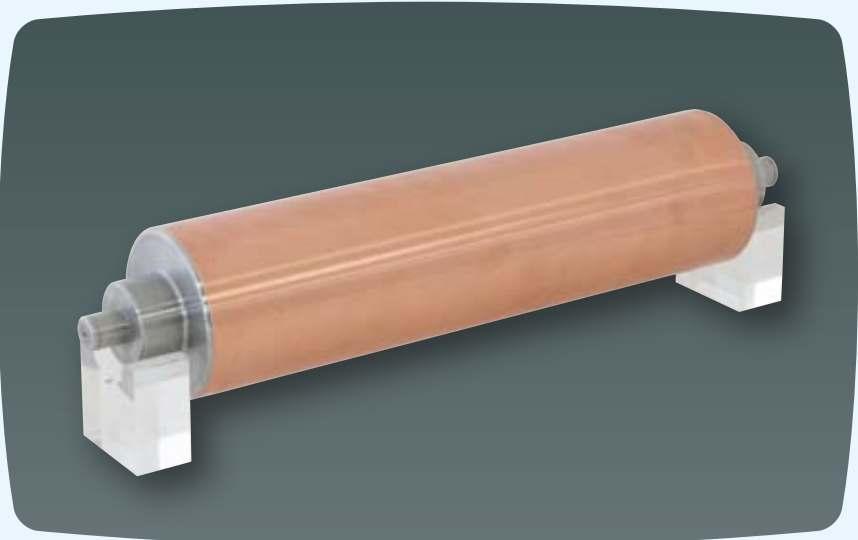
Enlarged view of threaded portion



Material	SUJ 2
Part name	Mirror surface roll (with 6-thread screw)
Size	φ80 × 605
Treatment	Hcr plating
Manufacturing factory	Fukushima factory
Equipment	Mirror surface grinding machine (Mirac)

Copper roll

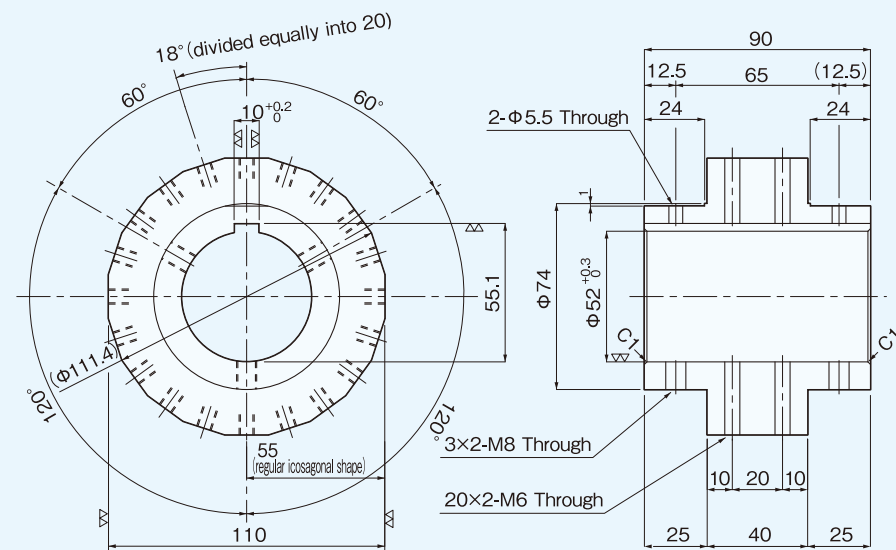
Based on the mechanical drawing, we correspond to various specifications such as ultra precise grinding and plating. We also make high precision rolls.



Material	Copper / SS400
Part name	Copper roll
Size	φ100 × 500
Geometrical tolerance	Concentricity 0.003
Treatment	
Manufacturing factory	Fukushima factory
Equipment	Mirror surface grinding machine (Mirac)

Flange

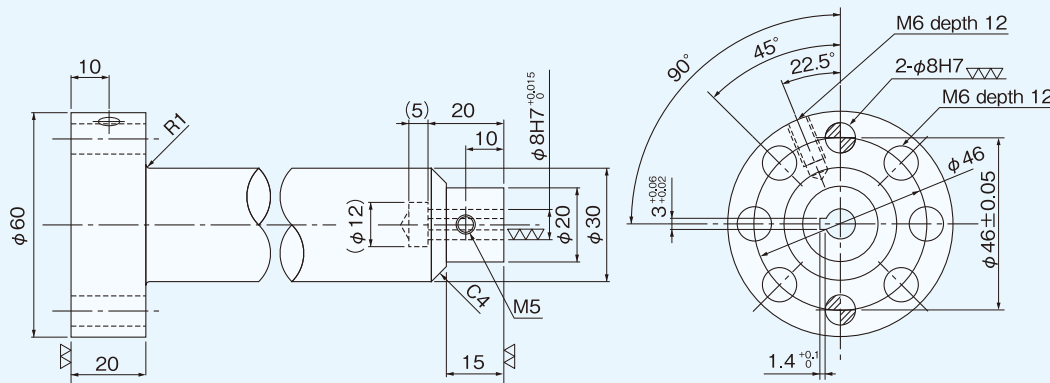
Based on the mechanical drawing, we correspond to various specifications such as ultra precise grinding and plating. We also make high precision flanges.



Material	SUS304
Part name	Flange
Size	φ111.4 × 90
Treatment	
Manufacturing factory	Head factory
Equipment	General purpose lathe machine, MC vertical type

Post

We make also the products, which use a lot machining processing, except shafts. We can accept various processing by substantial equipments.



Notice) Chamfering without instruction is C0.5.

Material	S55C
Part name	Post
Size	φ60 × 172
Treatment	Electro less nickel plating

Spindle axis

The high precision of level of micron is required on dimensional tolerance and geometrical tolerance also at the spindle axis, which is important as central part of machine tools. YSK has the grinding factory at constant temperature and then we can meet those requirements.



Spindle axis



Internal and external grinding, Spindle axis



Wire cutting, Spindle axis

Drive shaft

The drive shaft, which is the main axis for transmitting the power to each working parts, needs hardening on required part qualitatively. YSK has induction hardening equipment and then we can control the consistent quality at machining precision and hardening precision also.



Drive shaft 1



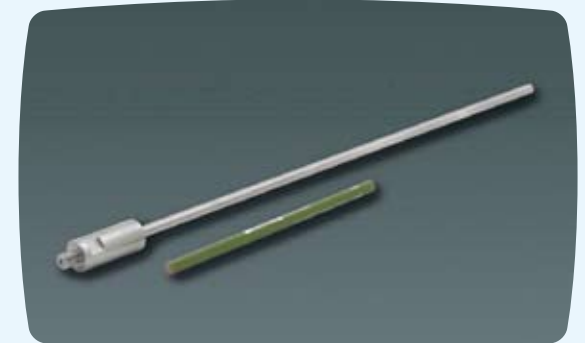
Drive shaft 2



Drive shaft 3

Machining shaft

Machining external diameter of shaft is the base machining technology. YSK can put concentricity at also thin and long shaft with step out.



Machining shaft 1



Machining shaft 2



Black oxide finished machining shaft

Roller shaft

About the quality of roller axis, which is core part of conveyer, high level is required such as the precision of run out is of course and precision of surface roughness also.



Roller axis



Taper roller axis



Precise cutter roller axis

Eccentric axis, Cam shaft

A camshaft changing a moving direction, the eccentric axis needs the processing of multi axial directions.
YSK can make various variations by the technique cultivated for many years.



Eccentric axis



Cam shaft



Eccentric axis, Cam shaft

The shaft with quenching processing

For a quenched product, it is the most difficult skill to make such as the long keyway or tap.
YSK has completed the technique as a specialized maker of the quenching shafts.



Hardening shaft with keyway



Shaft with welding flange



Hardening milling machining shaft

Gear, Rack machining

A gear and the rack, used mainly for transmission of the power, are the indispensable processing for position forwarding and the timing mechanism of the machine tool.
YSK makes from one piece for the customer's request.



Gear machining axis 1



Gear machining axis 2



Hardening round rack shaft

Base plate

The basic precision is required in the base plate which is foundation of machine.
YSK has large machining centers. We make not only shaft but also plate products.



Base plate



Plate(A5052)



Plate(S50C)