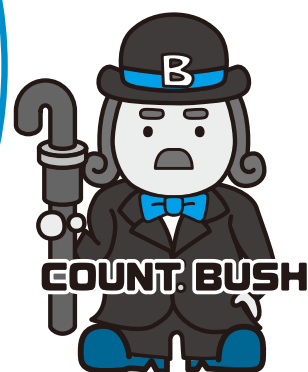


Linear Bush



While we maintain a low price, our linear bushes retain their high-precision and high-rigidity performance.
We provide the finest machinery parts for customers who design and make various machines.

Composition of part material

External cylinder	SUJ2
Holder	Resin (POM)
Ball	SUJ2
Ring seal	Nitrile rubber

Y-UU	Y-LUU	Only
Stop ring	Spring steel	



LINEAR BUSH

You can select our linear bush from abundant kinds



Y-UU

Standard type linear bush (resin holder)



YF-UU

Standard type linear bush (resin holder)

With electro less nickel plating



YK-UU

Standard type linear bush (resin holder)

With electro less nickel plating



YT-UU

Standard type linear bush (resin holder)

With electro less nickel plating



YFP-UU

Standard type linear bush (resin holder)

With electro less nickel plating



YKP-UU

Standard type linear bush (resin holder)

With electro less nickel plating



YTP-UU

Standard type linear bush (resin holder)

With electro less nickel plating



YFC-LUU

Standard type linear bush (resin holder)

With electro less nickel plating



YTC-LUU

Standard type linear bush (resin holder)

With electro less nickel plating



Y-LUU

Long type linear bush (resin holder)



YF-LUU

Long type linear bush (resin holder)

With electro less nickel plating



YK-LUU

Long type linear bush (resin holder)

With electro less nickel plating



YT-LUU

Long type linear bush (resin holder)

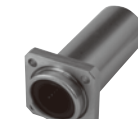
With electro less nickel plating



YFP-LUU

Long type linear bush (resin holder)

With electro less nickel plating



YKP-LUU

Long type linear bush (resin holder)

With electro less nickel plating



YTP-LUU

Long type linear bush (resin holder)

With electro less nickel plating



YKC-LUU

Long type linear bush (resin holder)

With electro less nickel plating