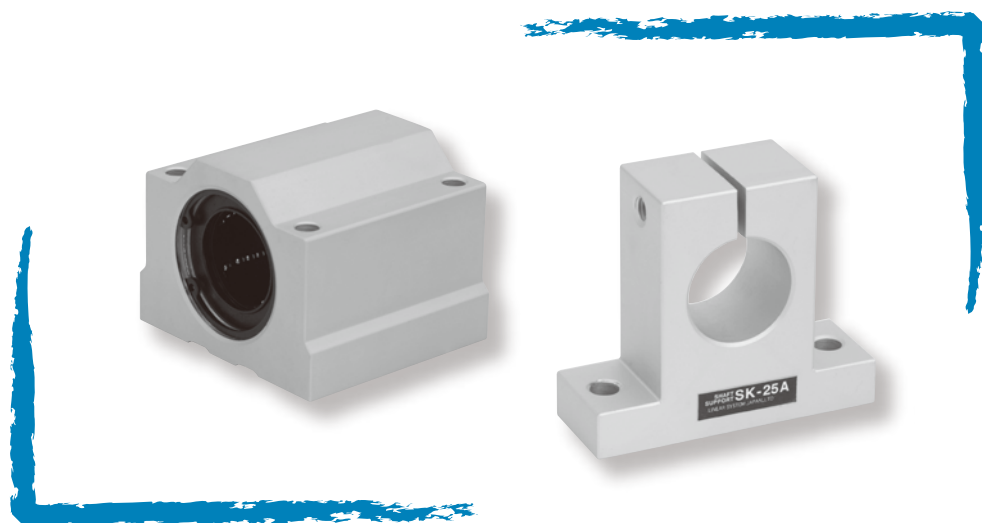


# Housing Support Unit

YU-AUU	Standard housing type
YU-LUU	Housing long type
SK	Support unit (horizontal specification type)
SHF	Support unit (vertical specification type)

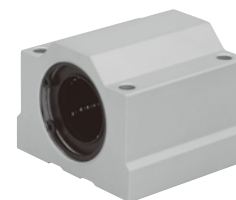


## Housing / Support Unit

### Housing

#### YU-AUU

Standard housing type



#### YU-LUU

Housing long type



The standard linear bush is mounted inside. The white alumite is treated on aluminum body and then the anti-rust effect is improved.

#### Composition of part material

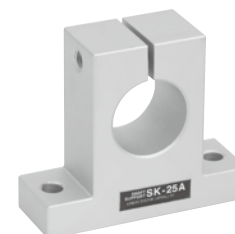
Housing	Aluminum alloy
Built-in bearing	
External cylinder	SUJ2
Holder	Resin (POM)
Ball	SUJ2
Ring seal	Nitrile rubber

Housing surface has alumite treatment.

### Support Unit

#### SK

Support unit (horizontal specification type)



#### SHF

Support unit (vertical specification type)



It's the unit which fix the shaft. It's most suitable to fix the shaft horizontally. The white alumite is treated on aluminum material and then antirust effect is improved.

#### Composition of part material

Body material	Aluminum alloy
Screw material	Stainless

The surface is treated by alumite.